

2010 Community Profile & 2011 Economic Outlook

Tyler Edwards
Special Projects



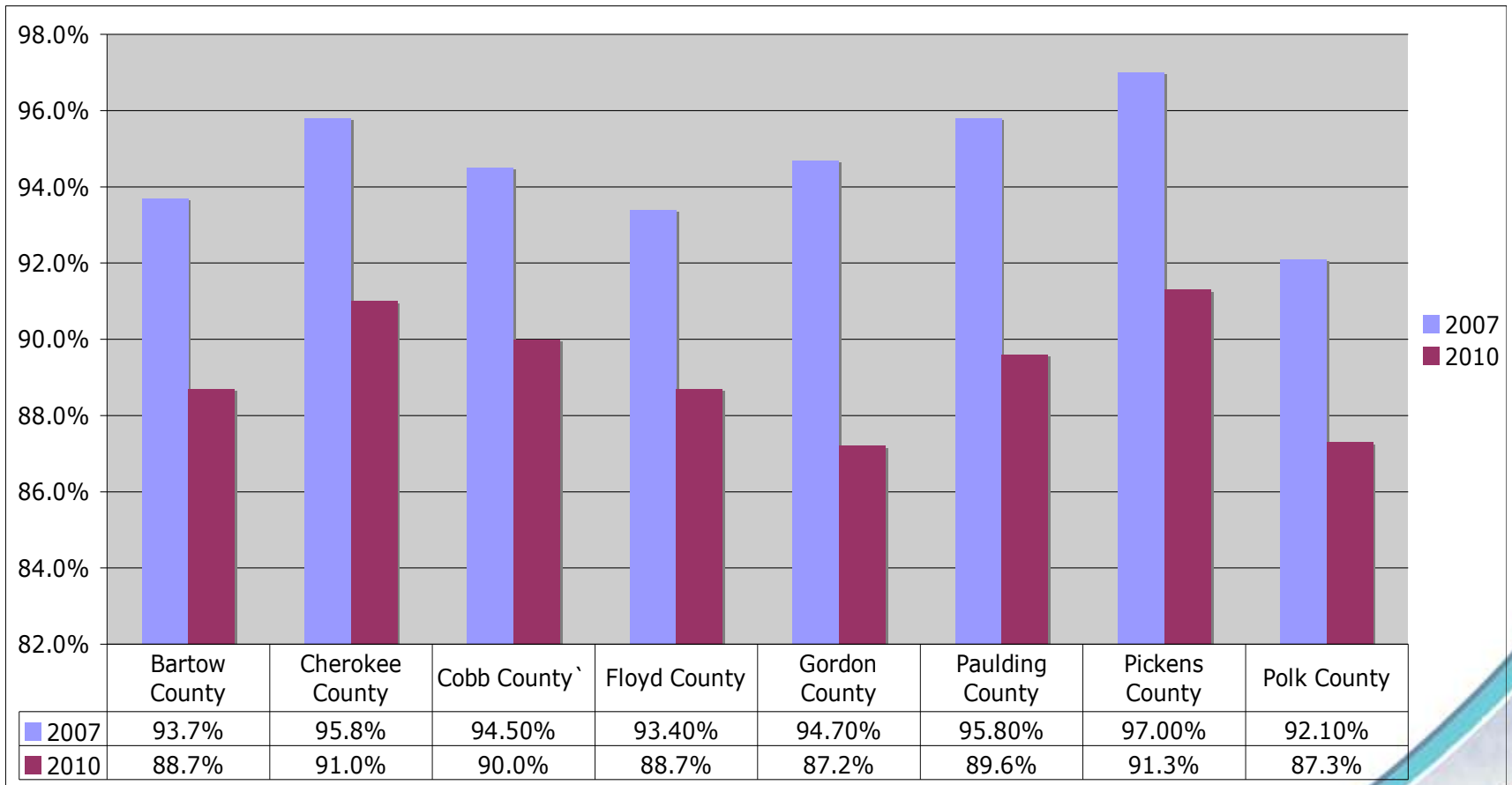
Bartow County

	2007	2010
Median Household Income	\$54,086	\$53,919
Median Home Value	\$130,284	\$102,408
Per Capita Income	\$23,459	\$22,018
Total Population	95,795	99,484
Civilian 16+ Employed	93.70%	88.70%



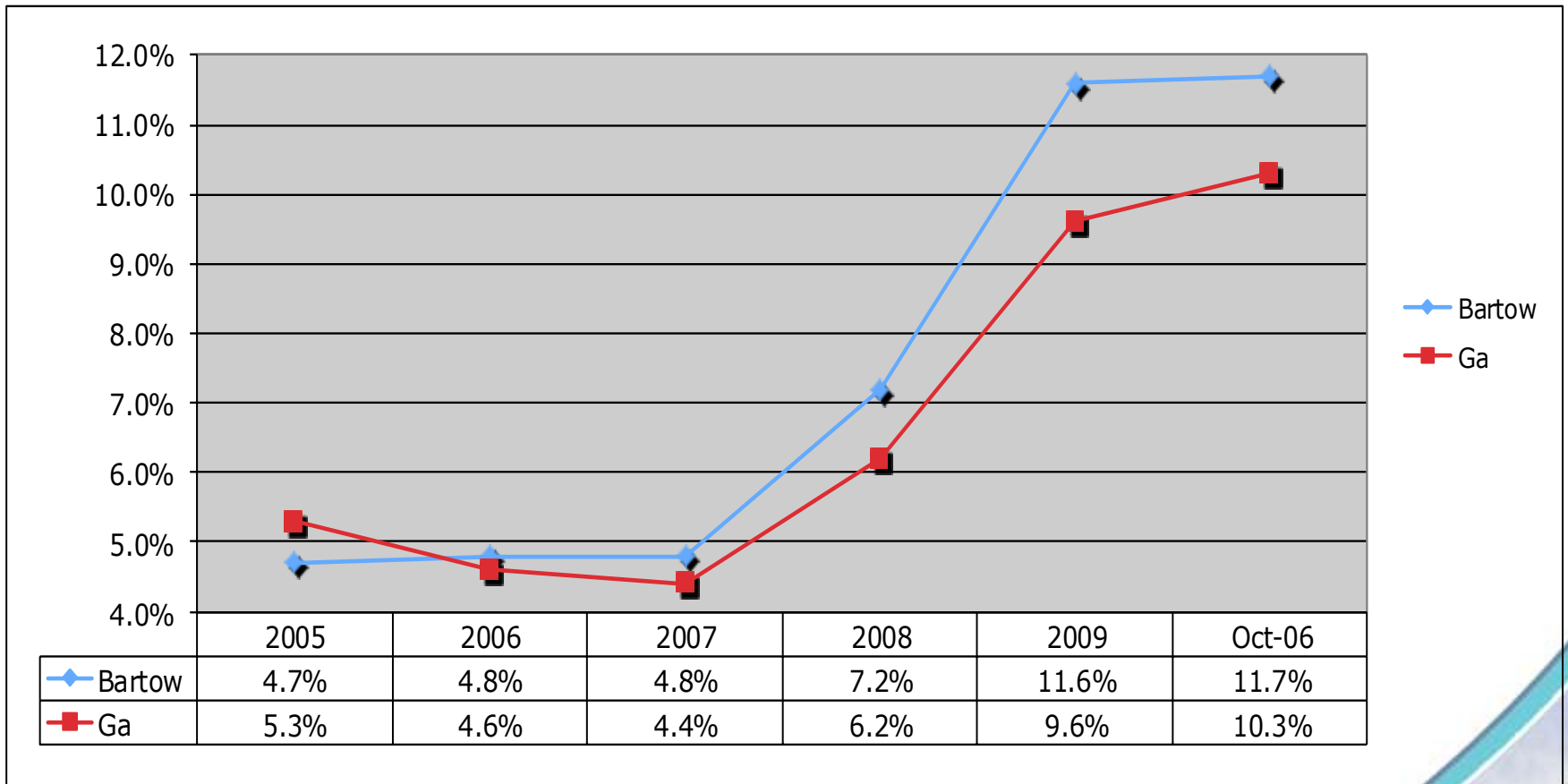
**All data acquired by the Cartersville/ Bartow County Department of Economic Development using ESRI Business Analyst Online

Continuous County Civilian Population 16+ Employed 2007, 2010



**All data acquired by the Cartersville/ Bartow County Department of Economic Development using ESRI Business Analyst Online

Unemployment Rates 2005- November 2010

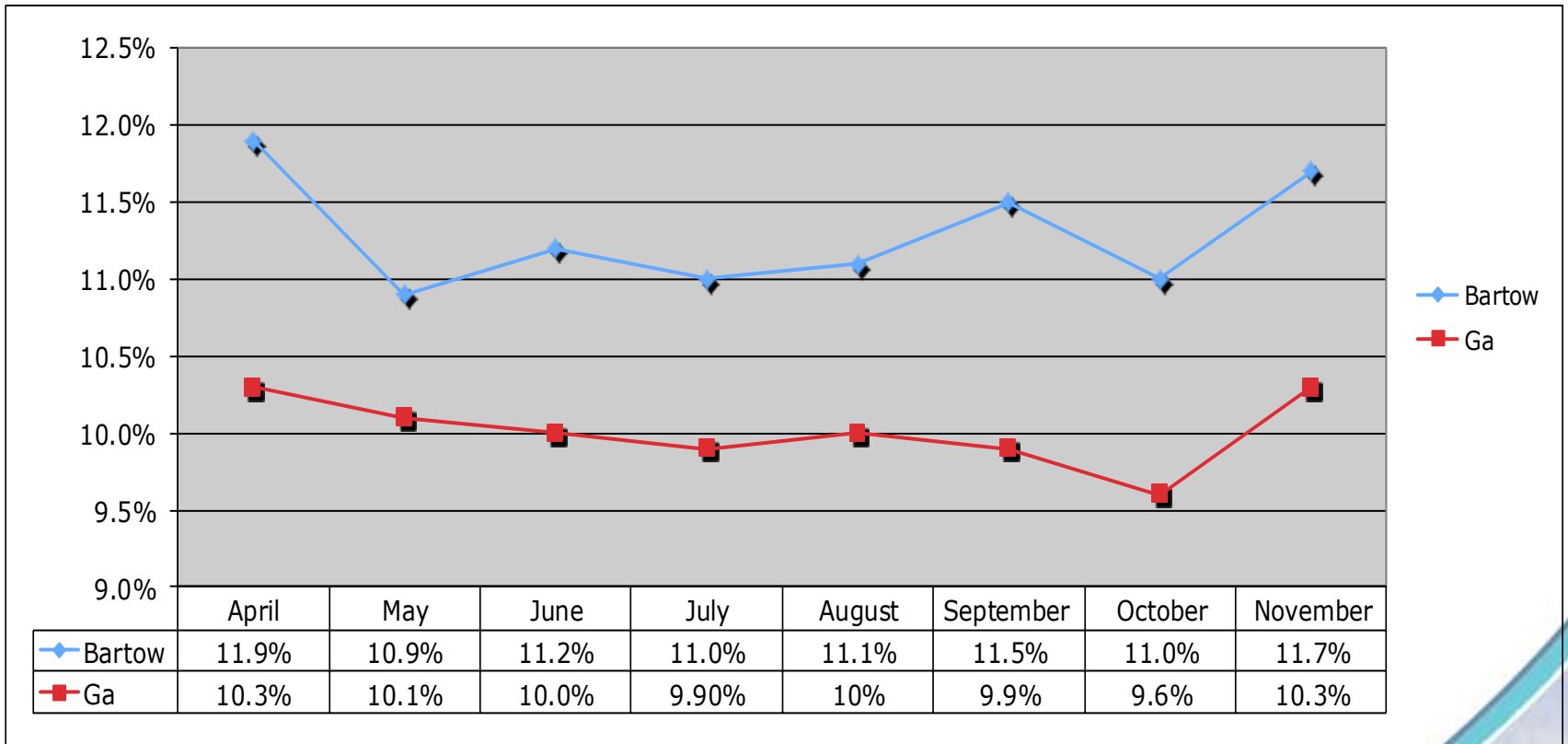


Bartow
Ga



**Data acquired by the Cartersville- Bartow County Department of Economic Development from the Georgia Department of Labor

Unemployment Rates April 2010- November 2010



Bartow
Ga

April-May

May-June

June-July

July-August

August-September

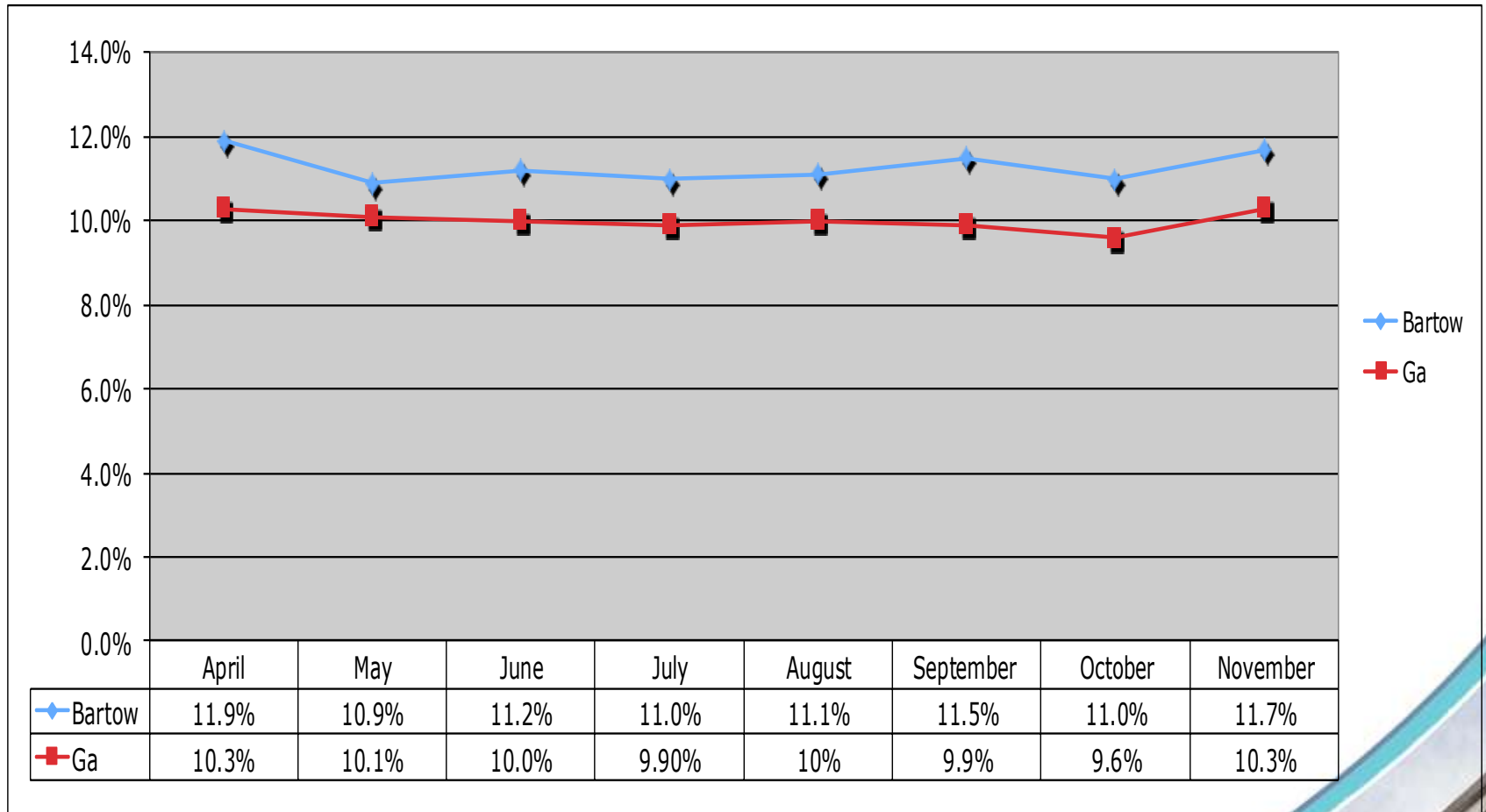
September-October

October-November

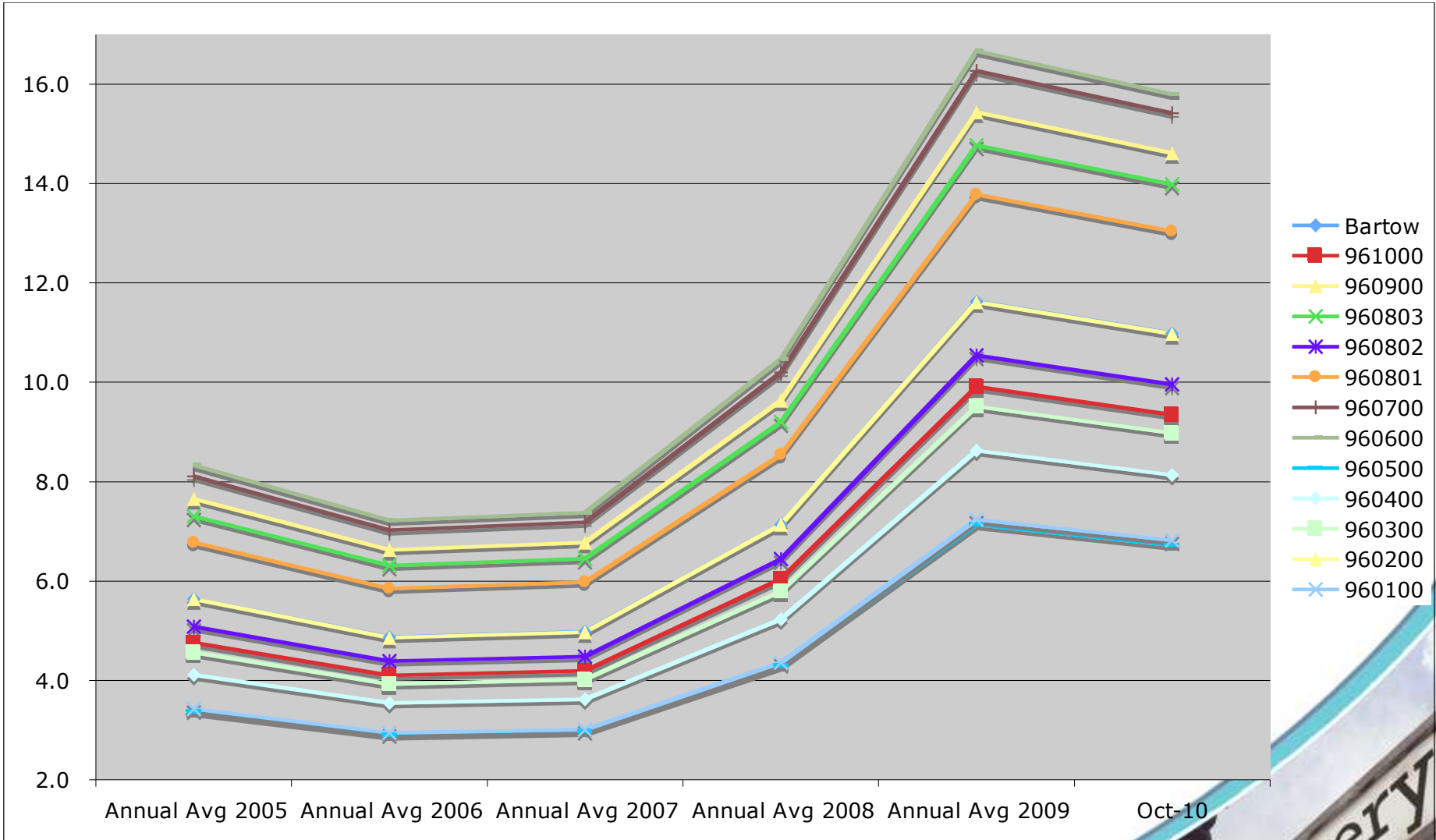


**Data acquired by the Cartersville- Bartow County Department of Economic Development from the Georgia Department of Labor

Unemployment Rates April 2010- November 2010



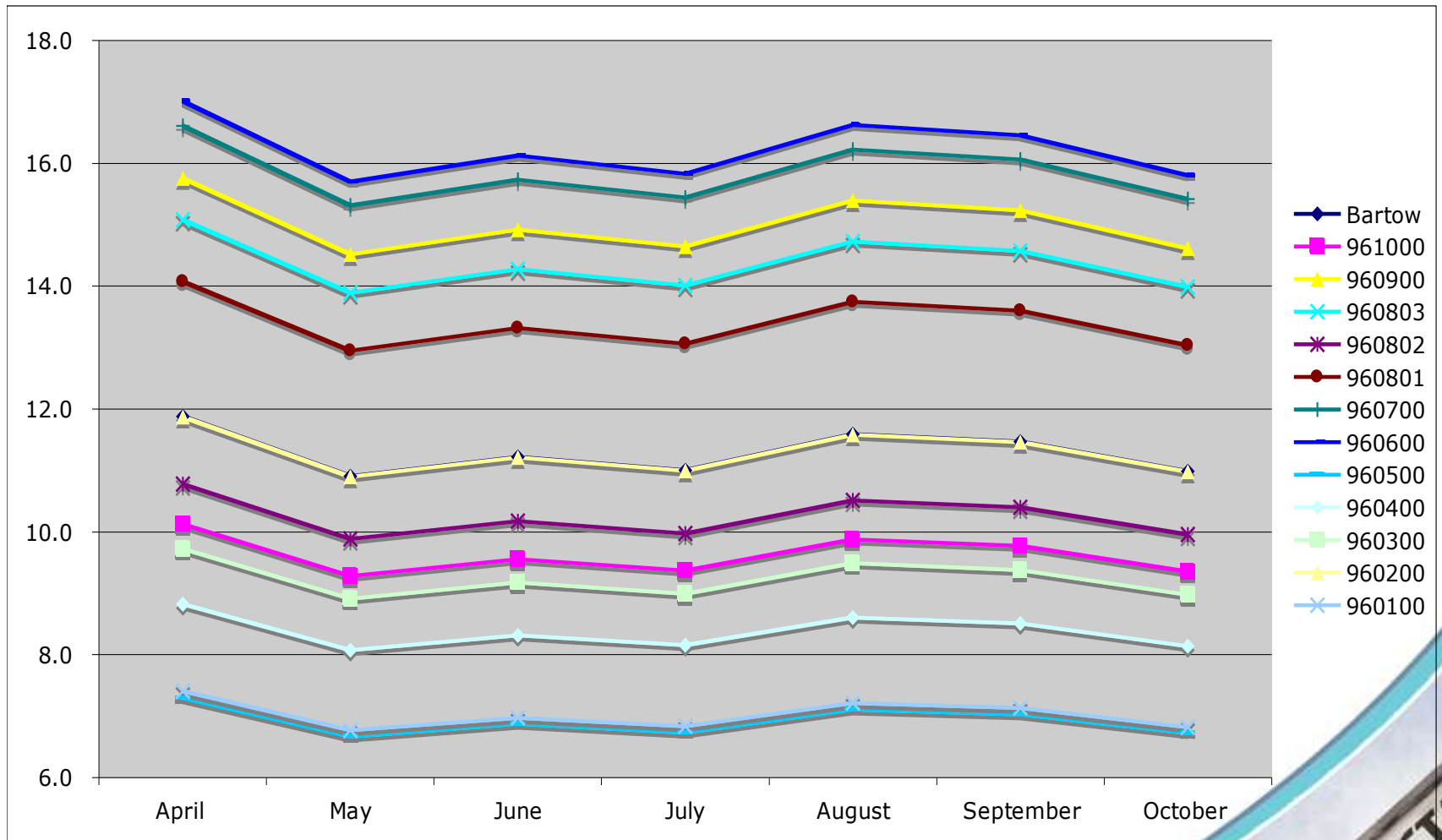
Unemployment by Census Tract 2005- October 2010



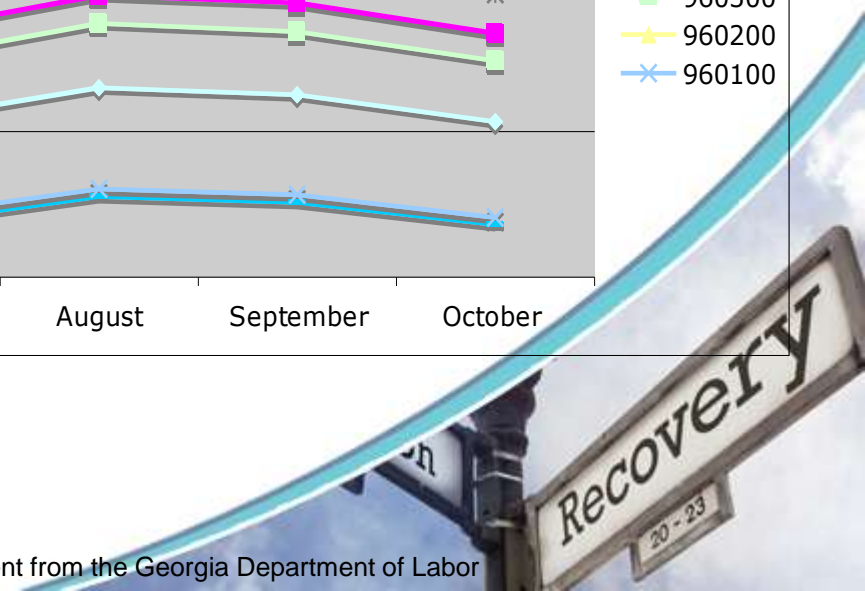
**Data acquired by the Cartersville- Bartow County Department of Economic Development from the Georgia Department of Labor

Unemployment by Census Tract

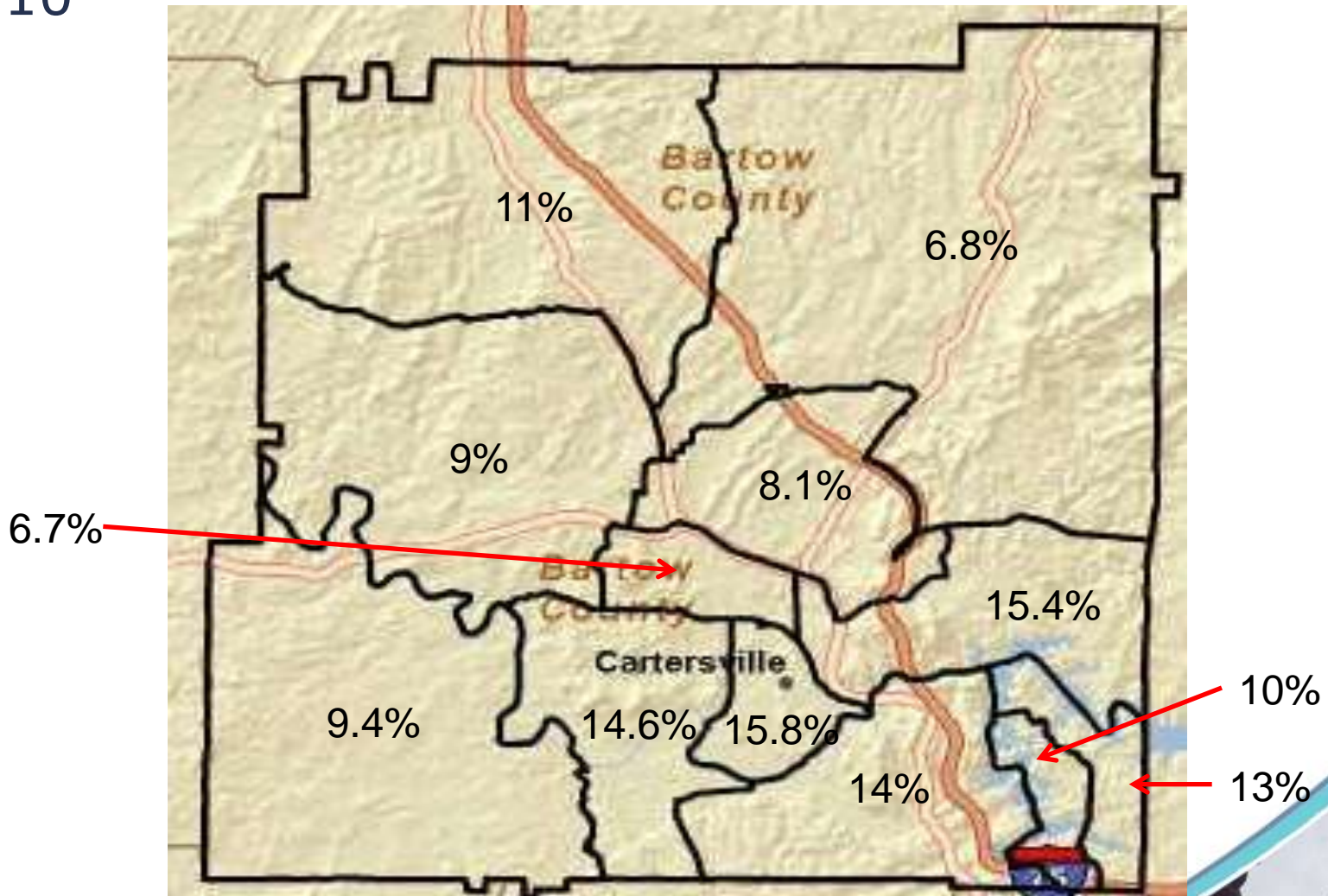
April 2010- October 2010



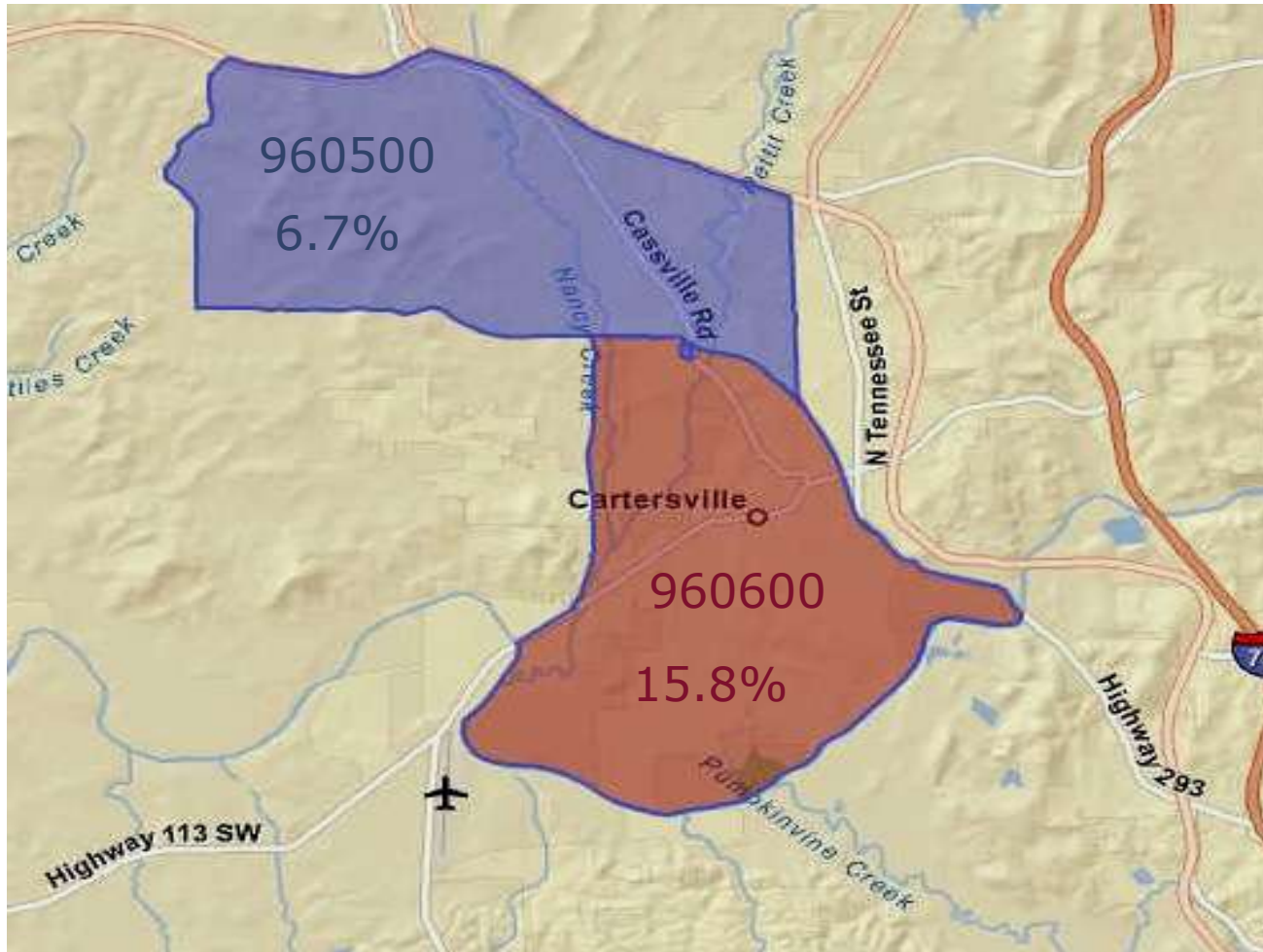
**Data acquired by the Cartersville- Bartow County Department of Economic Development from the Georgia Department of Labor



Unemployment Rates by Census Tract 2010

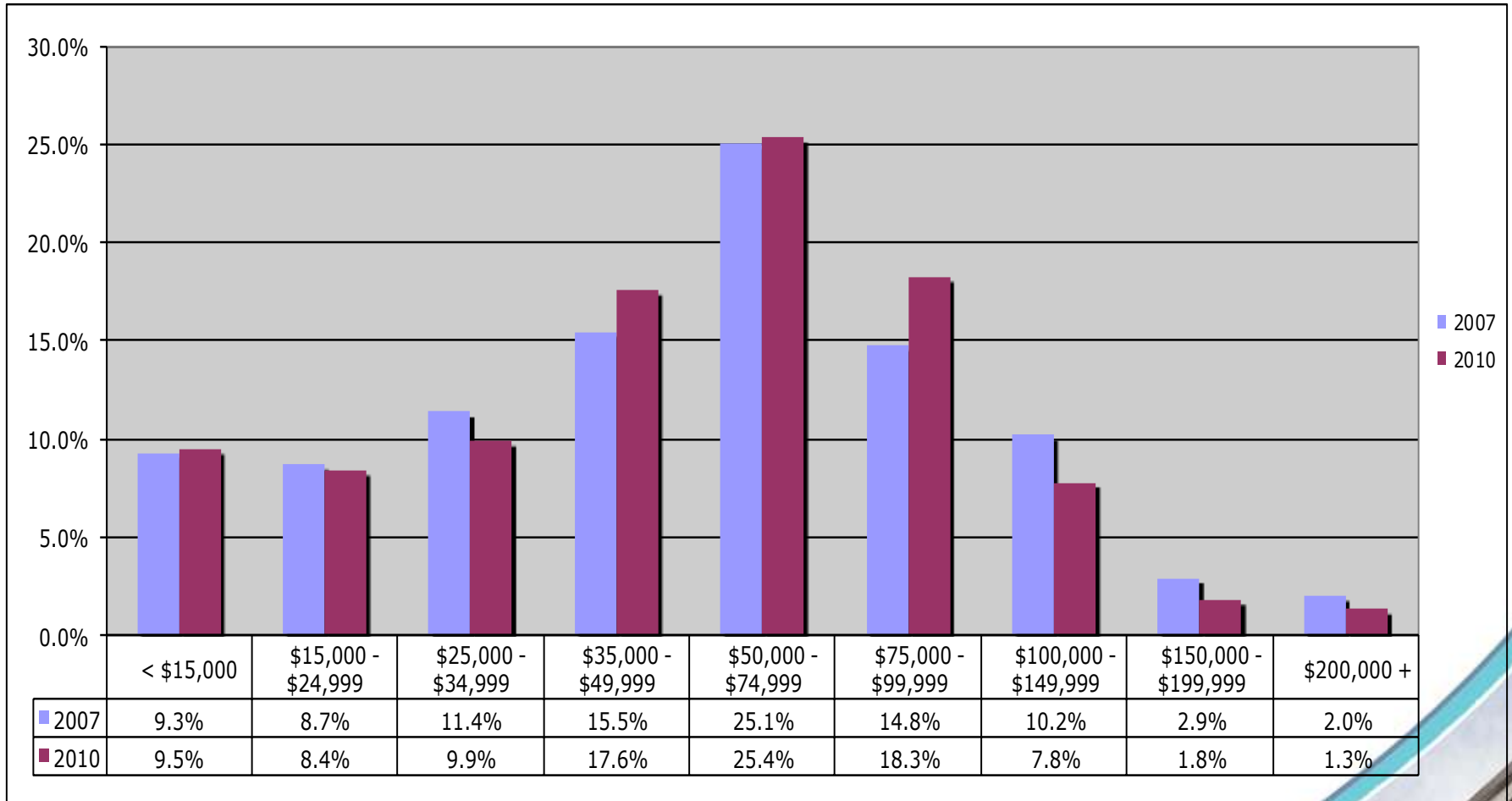


Unemployment Rates by Census Tract 2010



Recovery
20 - 23

Bartow County Households by Income 2007, 2010



	2007	2010
Household Income Base	\$34,446	\$35,658
Average Household Income	\$64,818	\$61,036

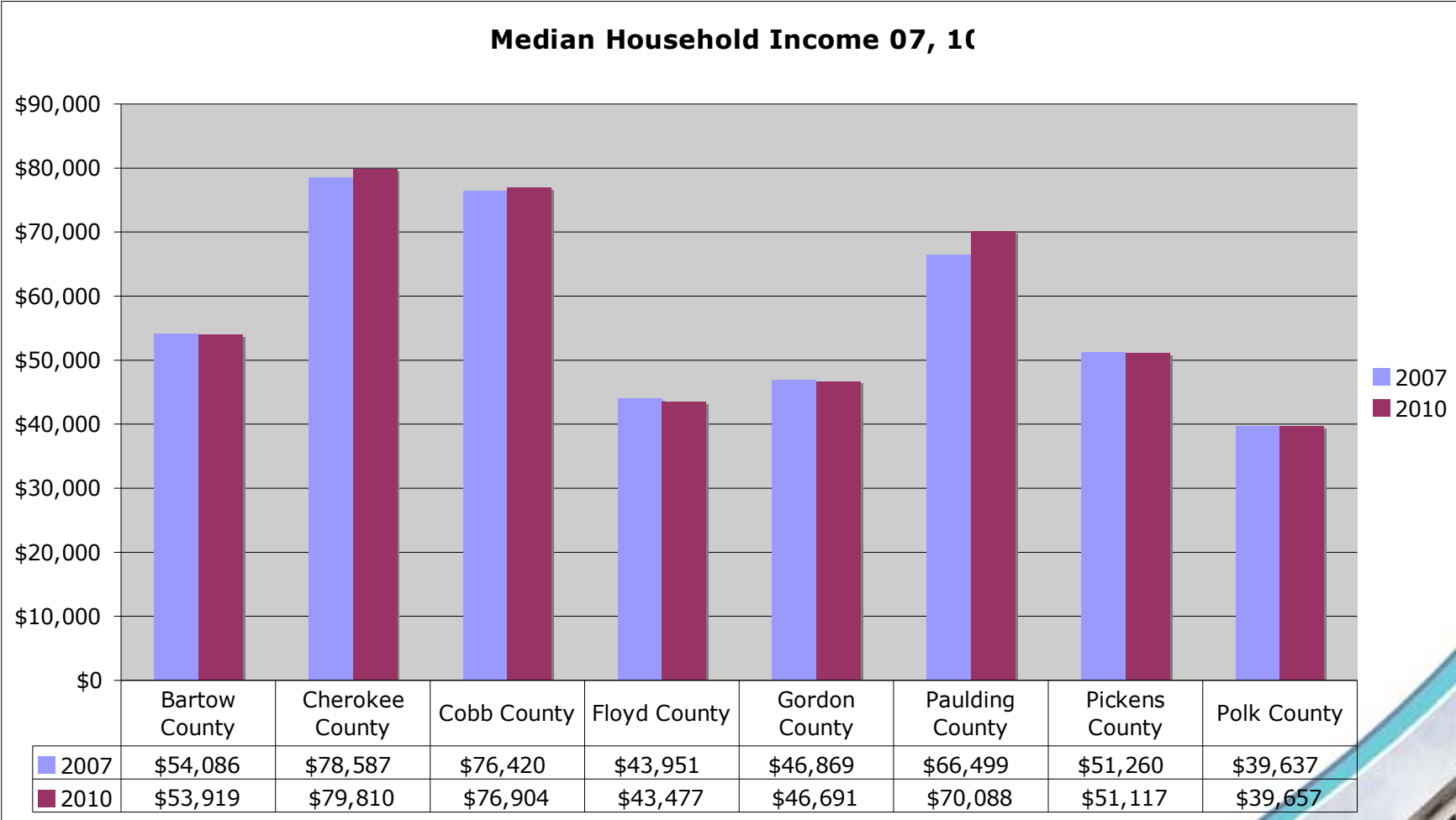
Cartersville Households by Income

2007, 2010



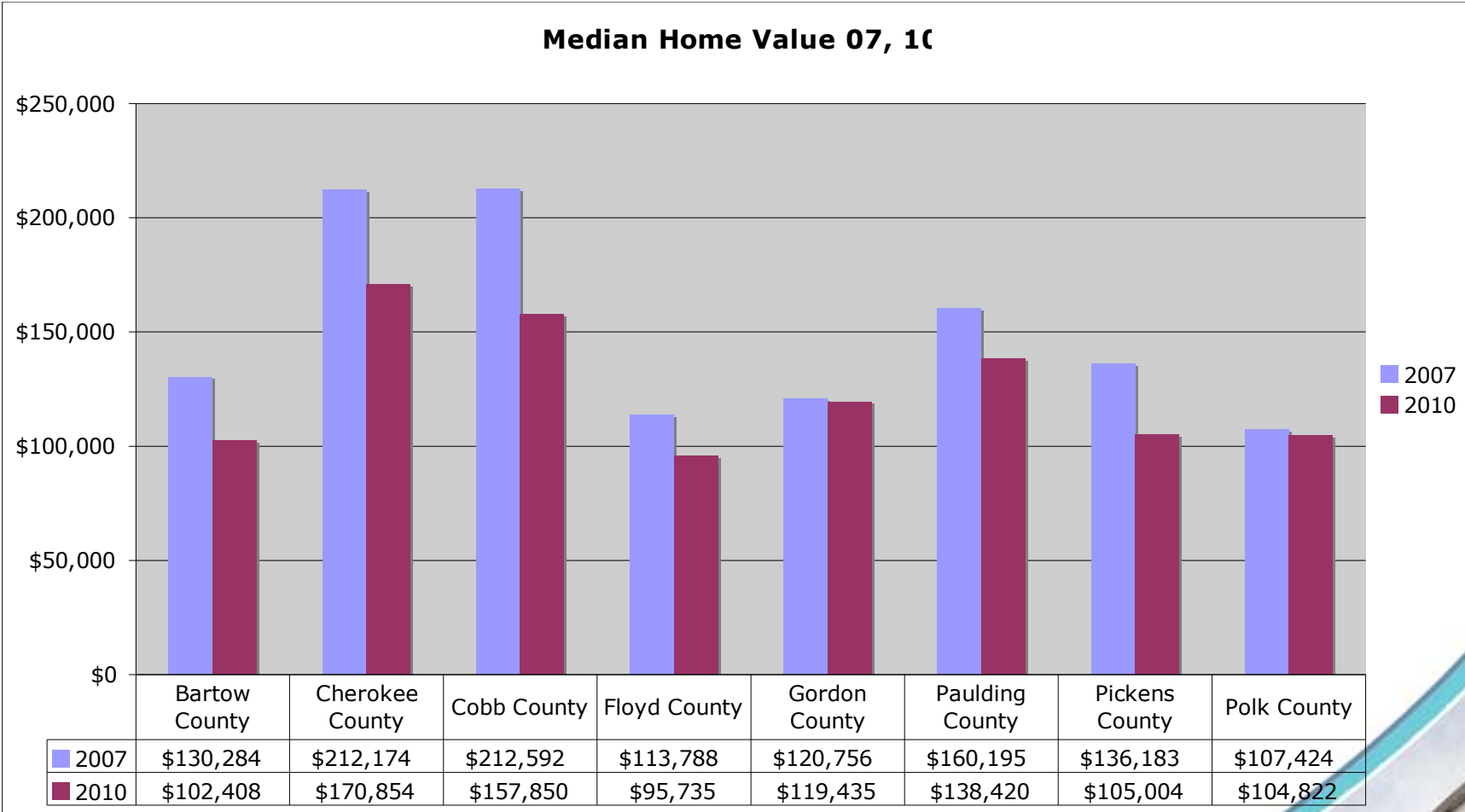
	2007	2010
Average Household Income	\$64,754	\$61,513
Household Income Base	\$7,087	\$7,394

Median Household Income 2007, 2010



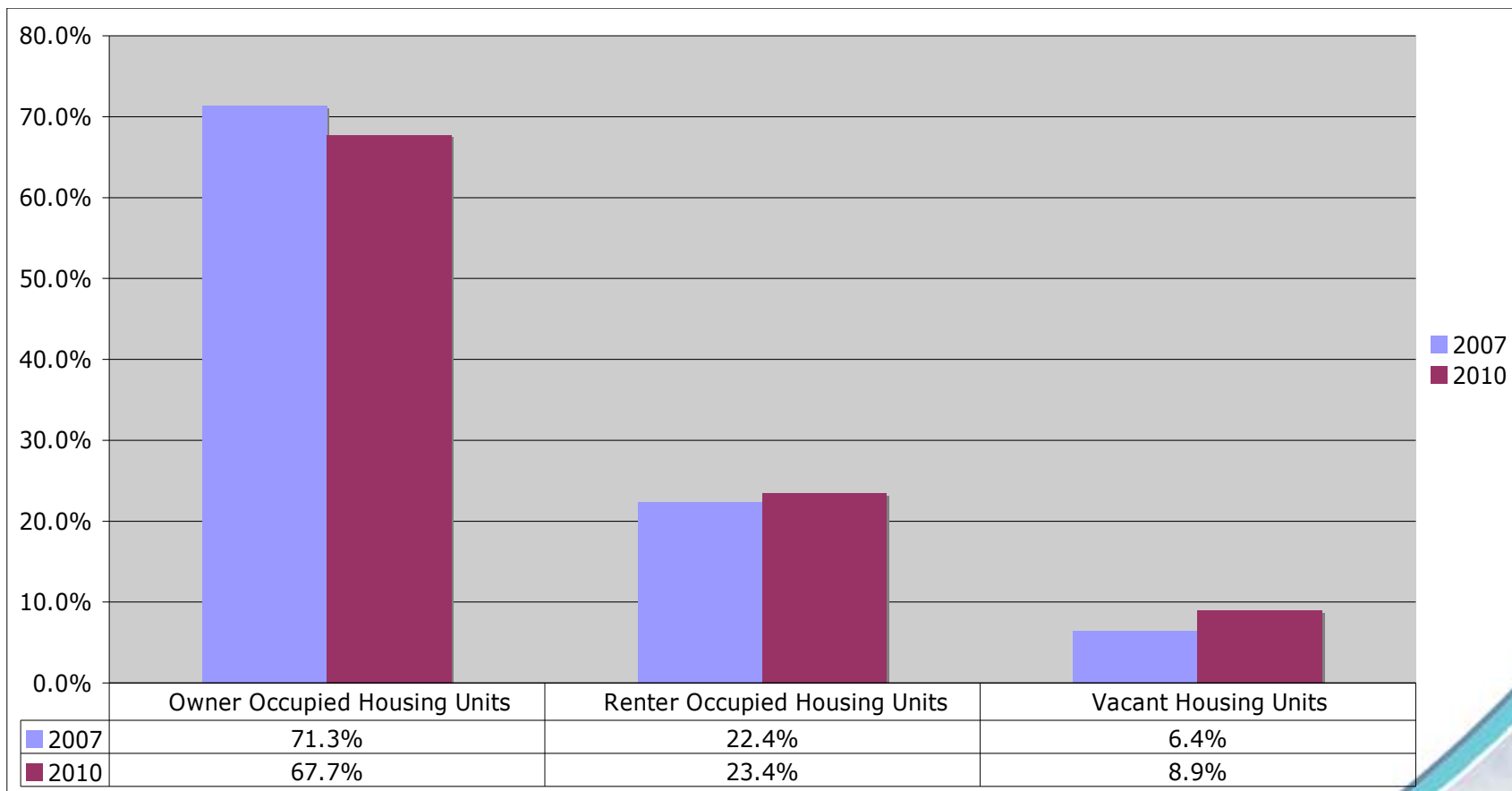
**All data acquired by the Cartersville/ Bartow County Department of Economic Development using ESRI Business Analyst Online

Median Home Value 2007, 2010



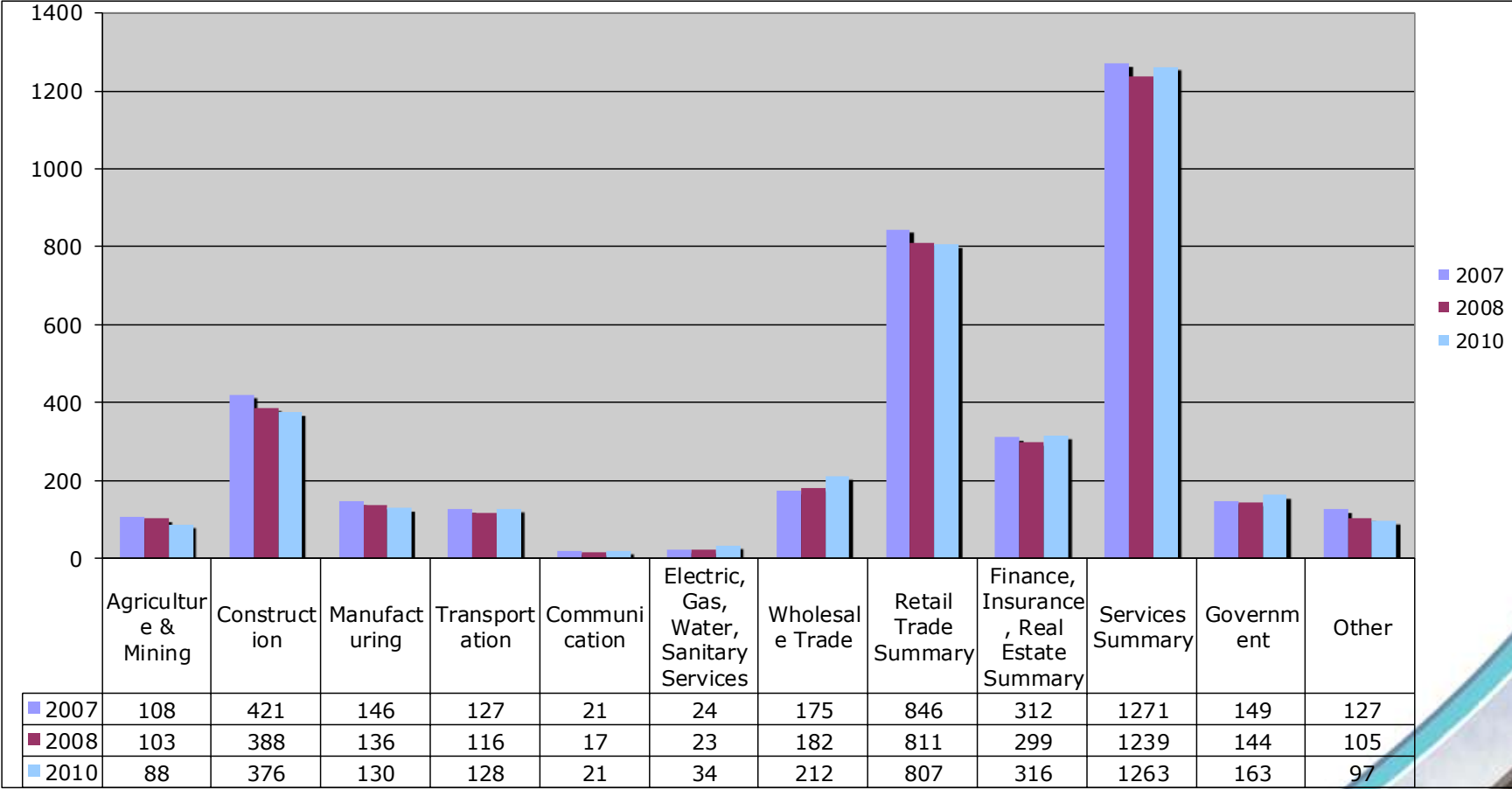
**All data acquired by the Cartersville/ Bartow County Department of Economic Development using ESRI Business Analyst Online

Bartow County Housing Data 2007, 2010



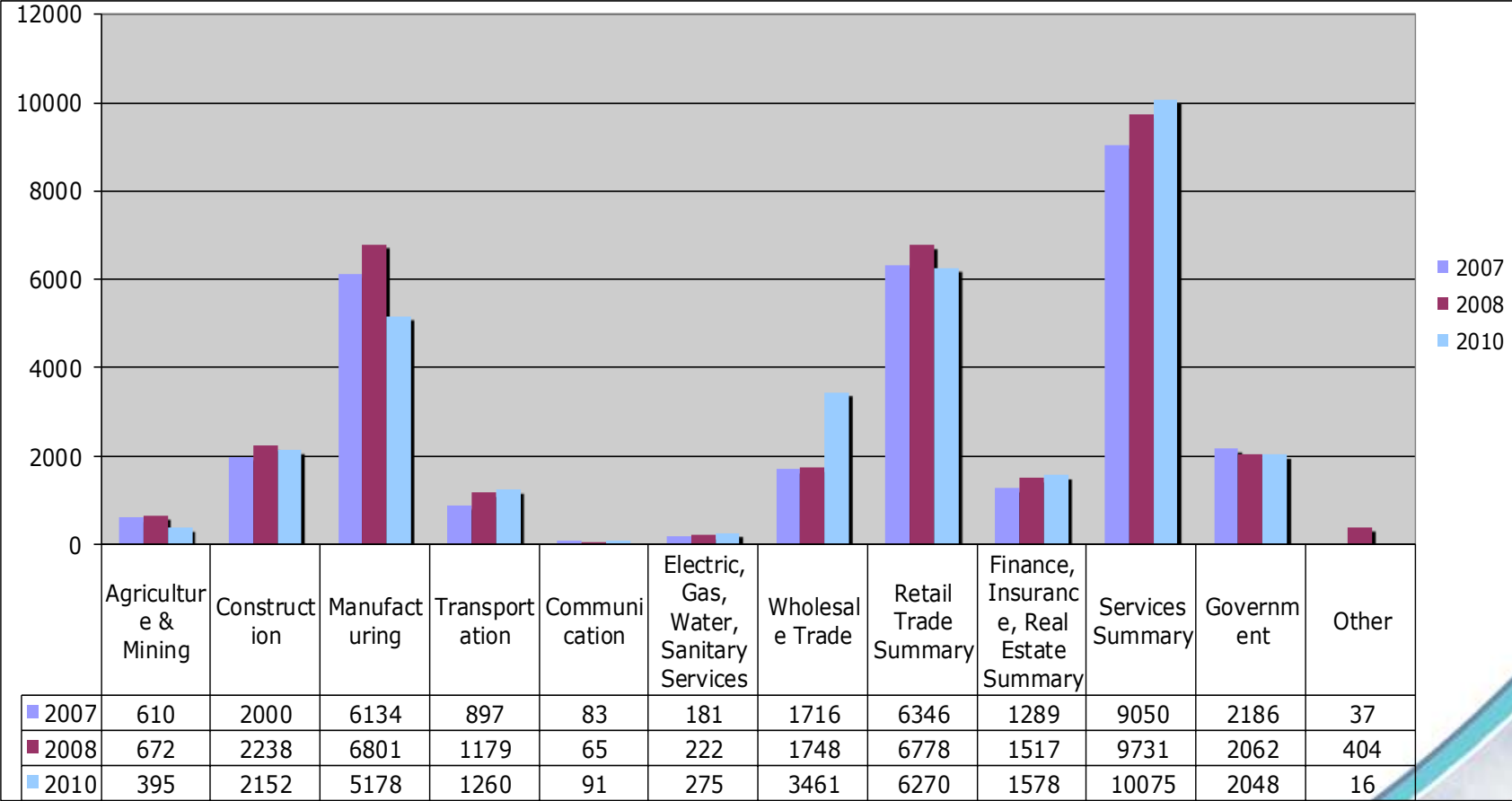
	2007	2010
Housing Units	36,792	39,138

Bartow County Total Business 2007, 2008, 2010



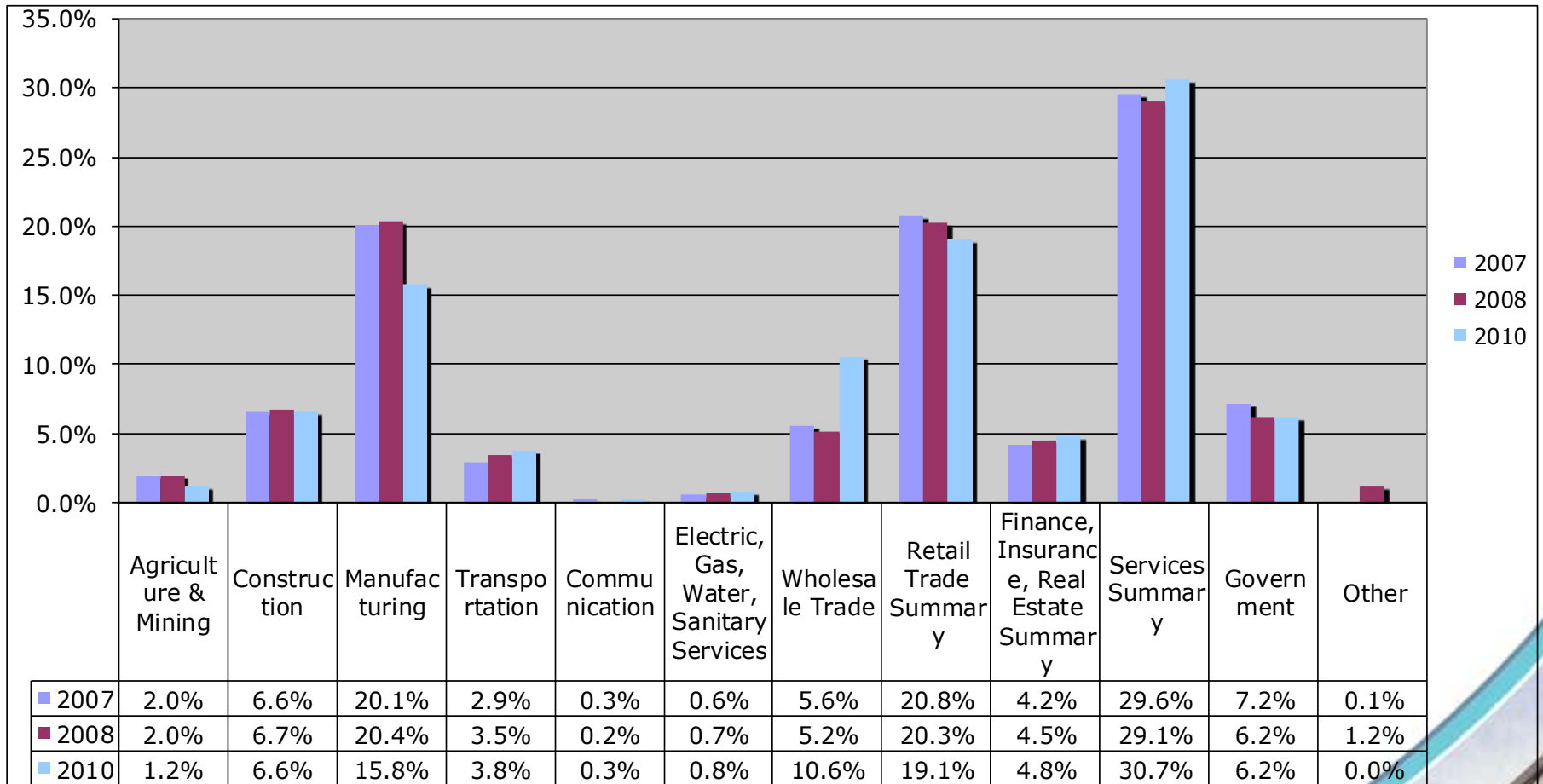
**All data acquired by the Cartersville/ Bartow County Department of Economic Development using ESRI Business Analyst Online

Bartow County Employees by Business 2007, 2008, 2010



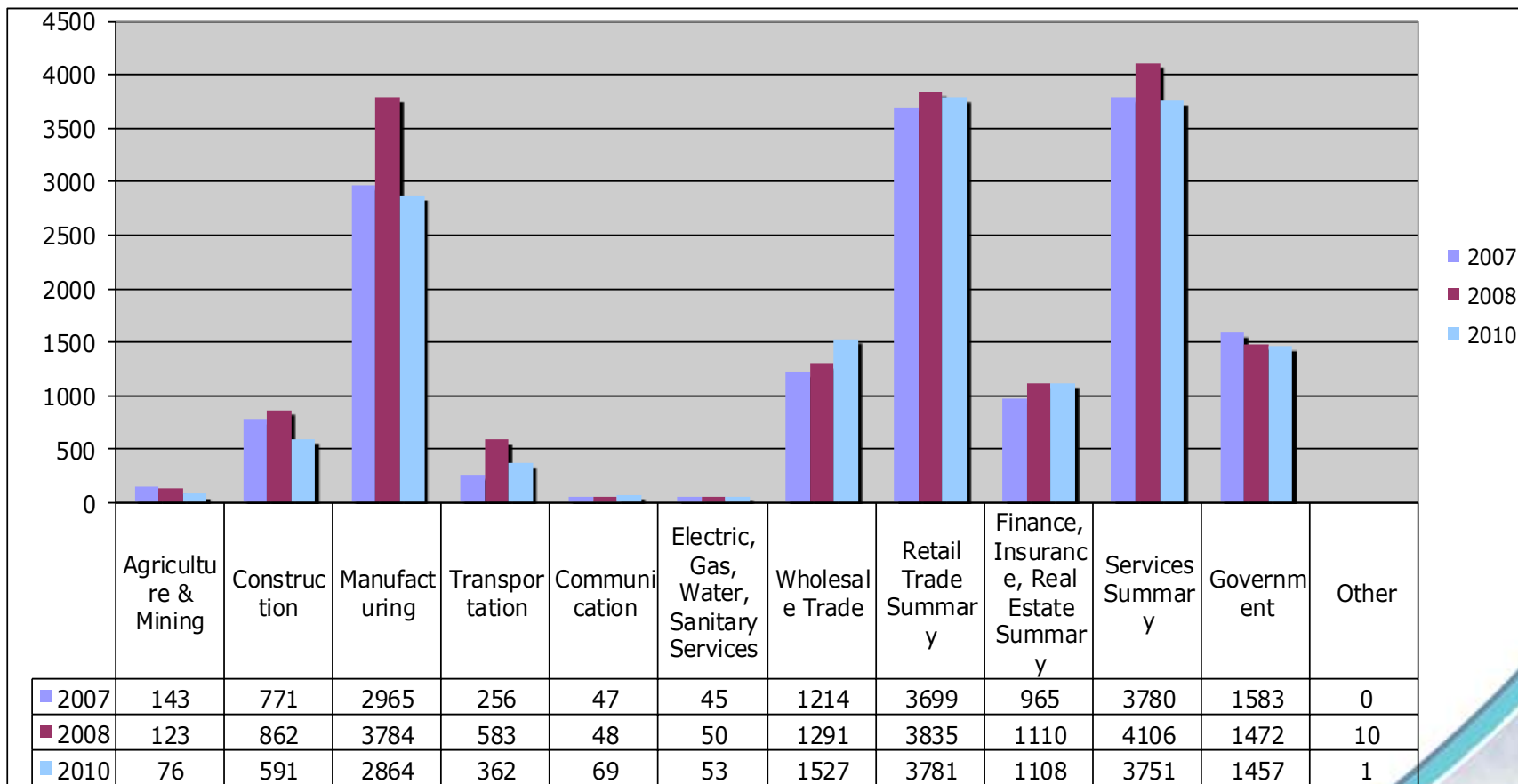
**All data acquired by the Cartersville/ Bartow County Department of Economic Development using ESRI Business Analyst Online

Bartow County % of Total Employment by Business 2007, 2008, 2010



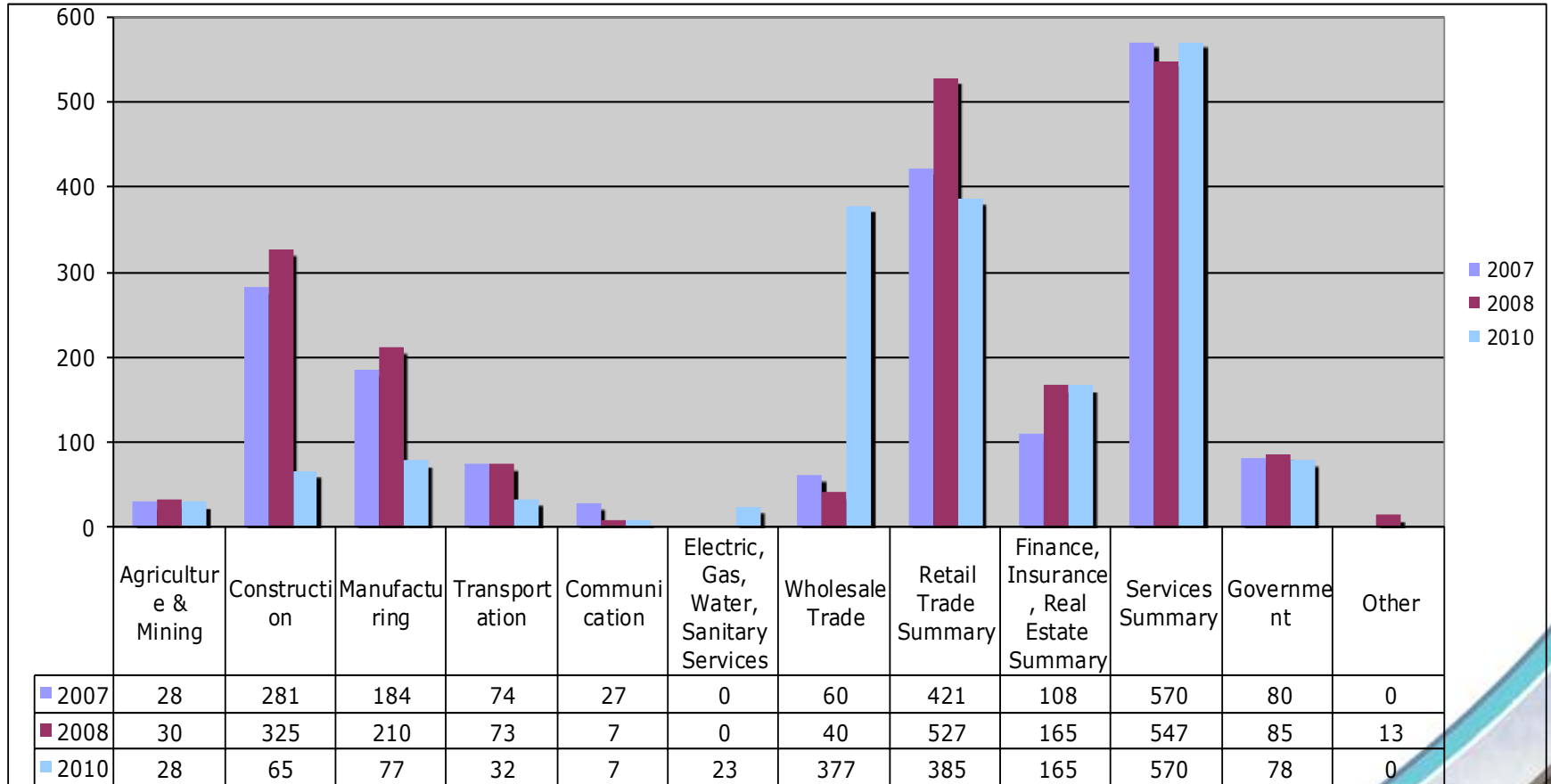
**All data acquired by the Cartersville/ Bartow County Department of Economic Development using ESRI Business Analyst Online

Cartersville Employees by Business 2007, 2008, 2010



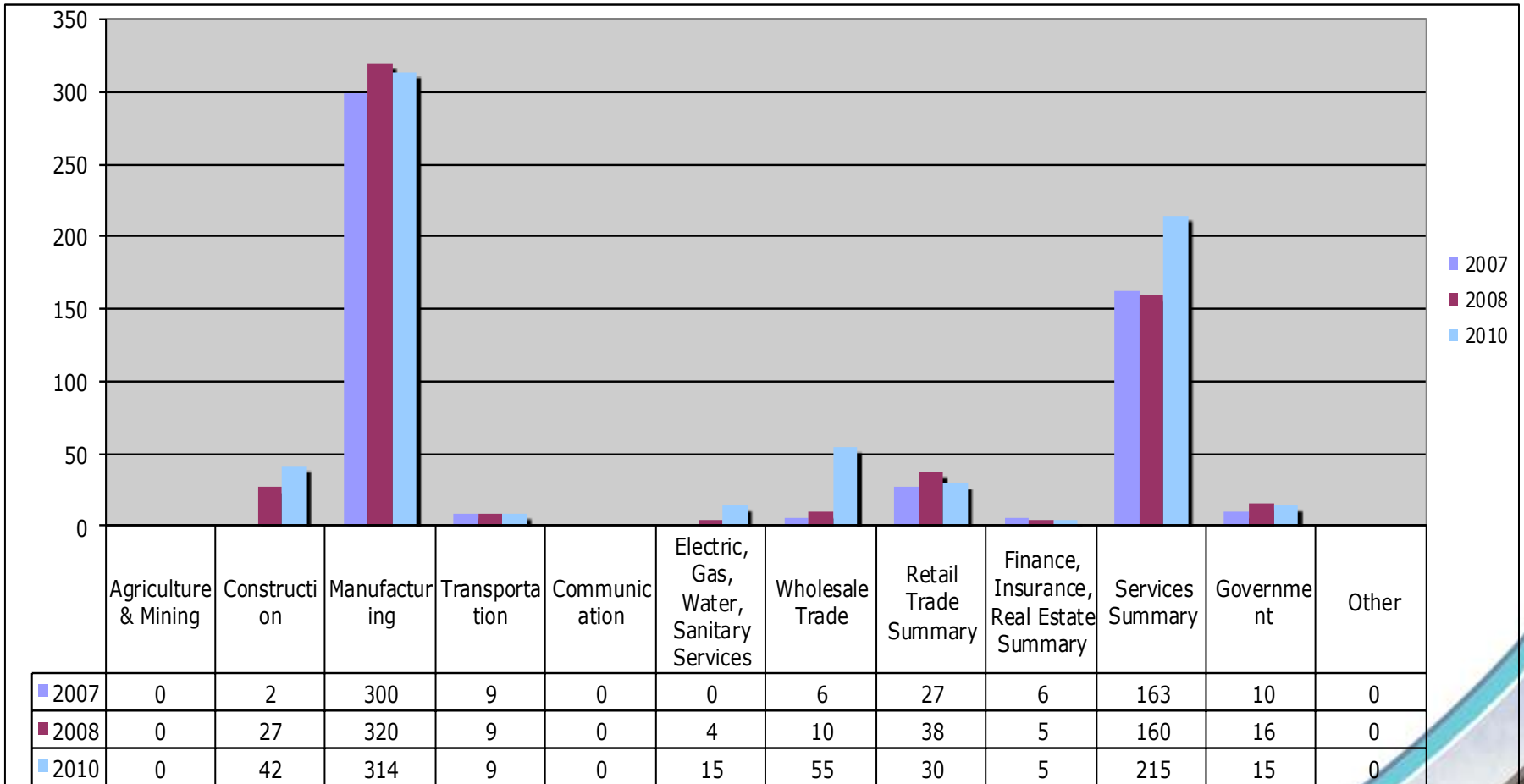
**All data acquired by the Cartersville/ Bartow County Department of Economic Development using ESRI Business Analyst Online

Adairsville Employee per Business 2007, 2008, 2010



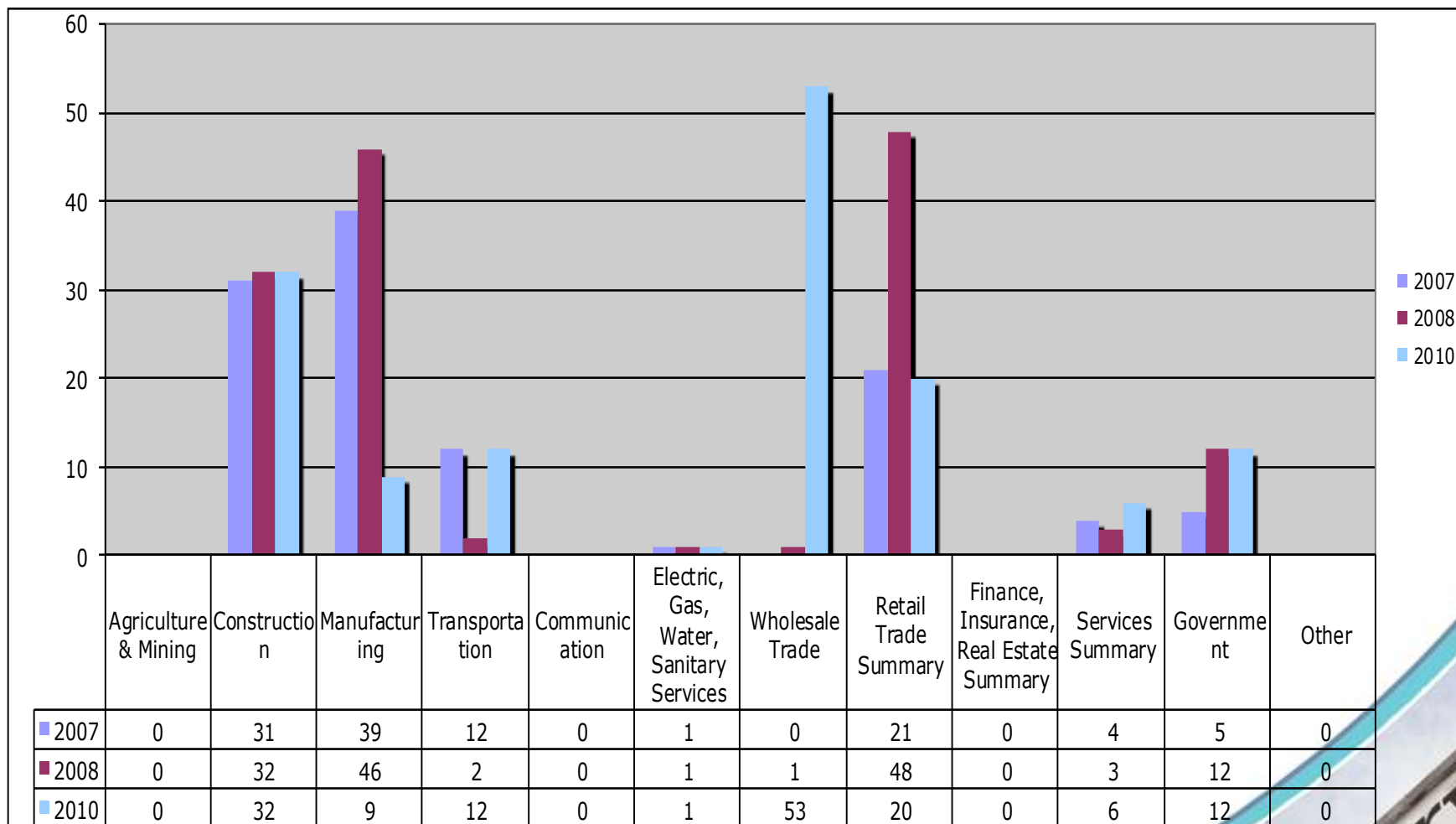
**All data acquired by the Cartersville/ Bartow County Department of Economic Development using ESRI Business Analyst Online

Emerson Employee by Business 2007, 2008, 2010



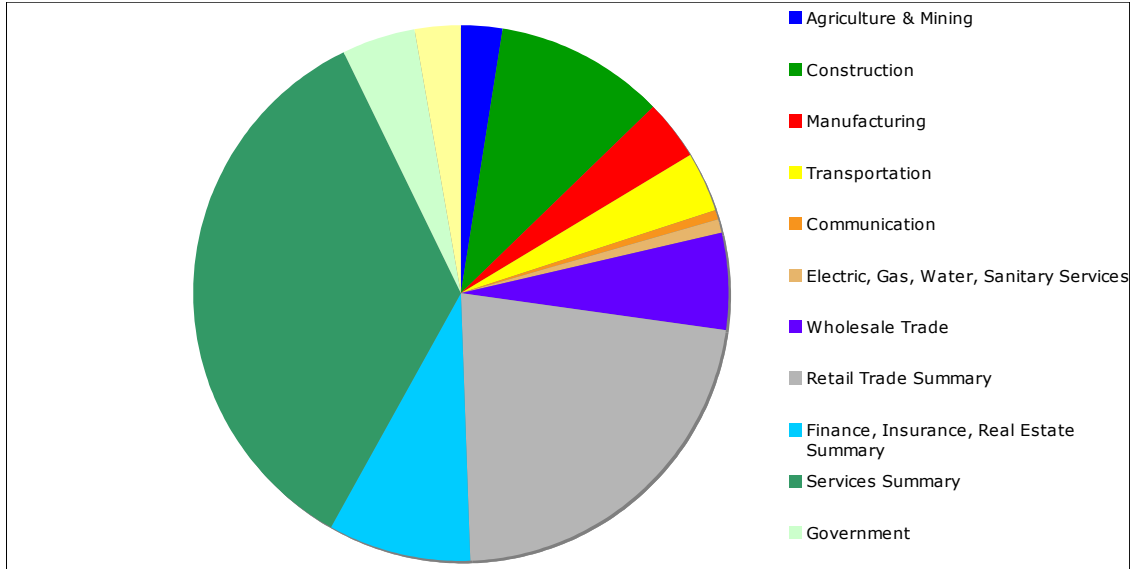
**All data acquired by the Cartersville/ Bartow County Department of Economic Development using ESRI Business Analyst Online

White Total Employee by Business 2007, 2008, 2010

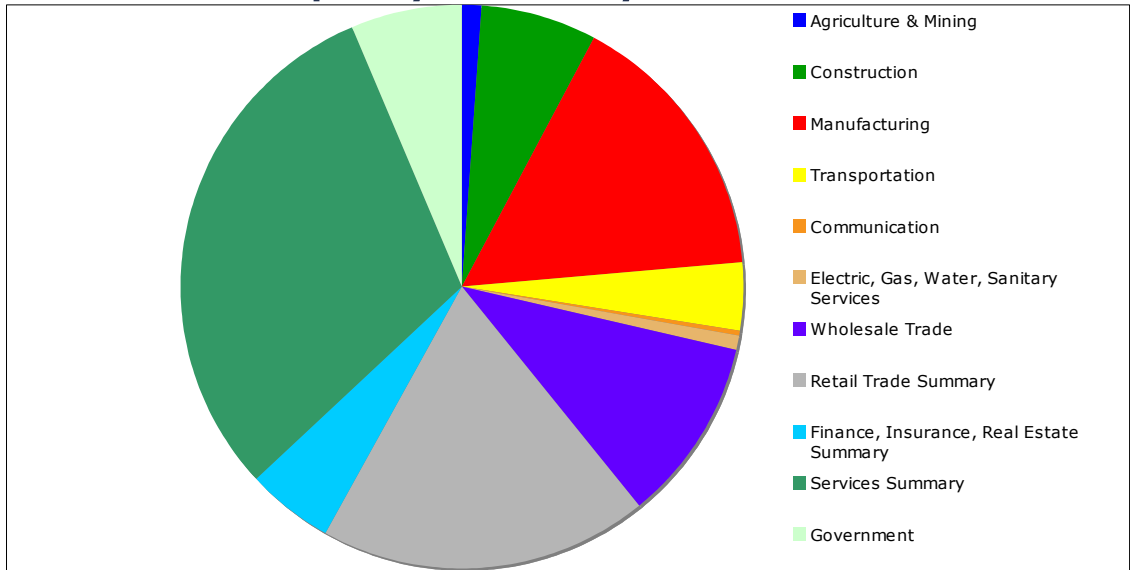


**All data acquired by the Cartersville/ Bartow County Department of Economic Development using ESRI Business Analyst Online

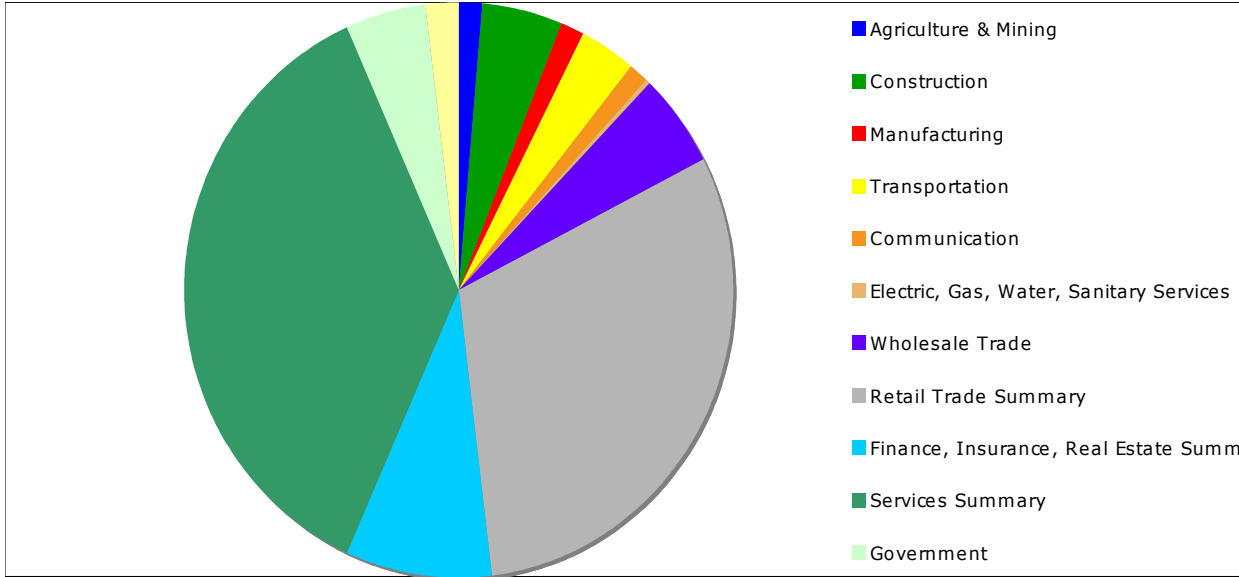
Bartow No. of Businesses - 2010



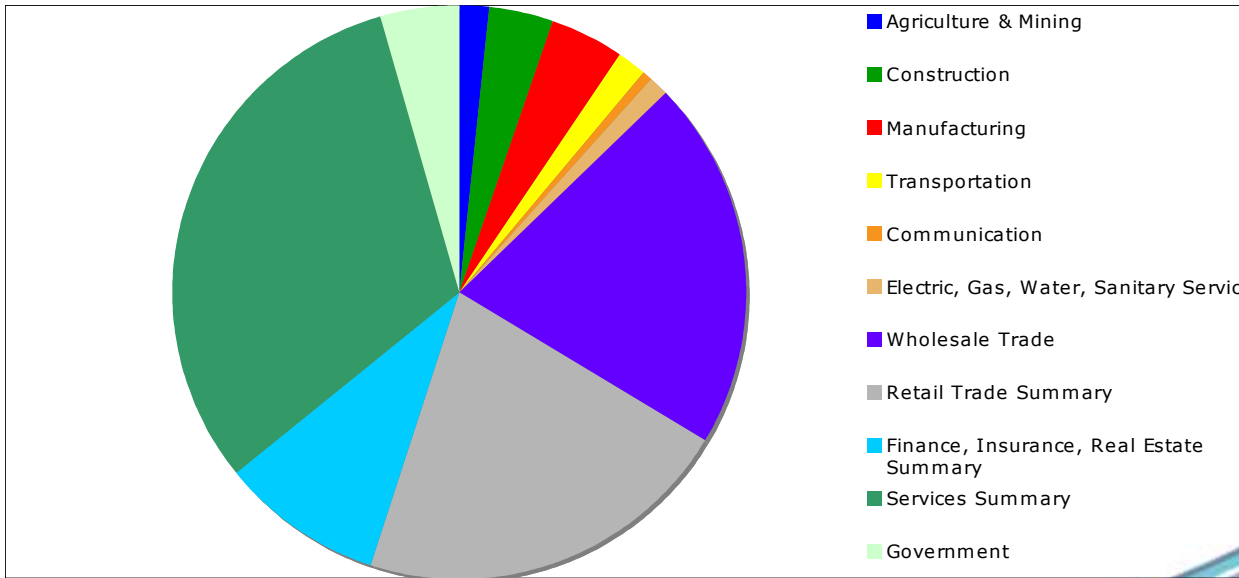
Bartow Employees by Business - 2010



Adairsville No. of Business - 2010

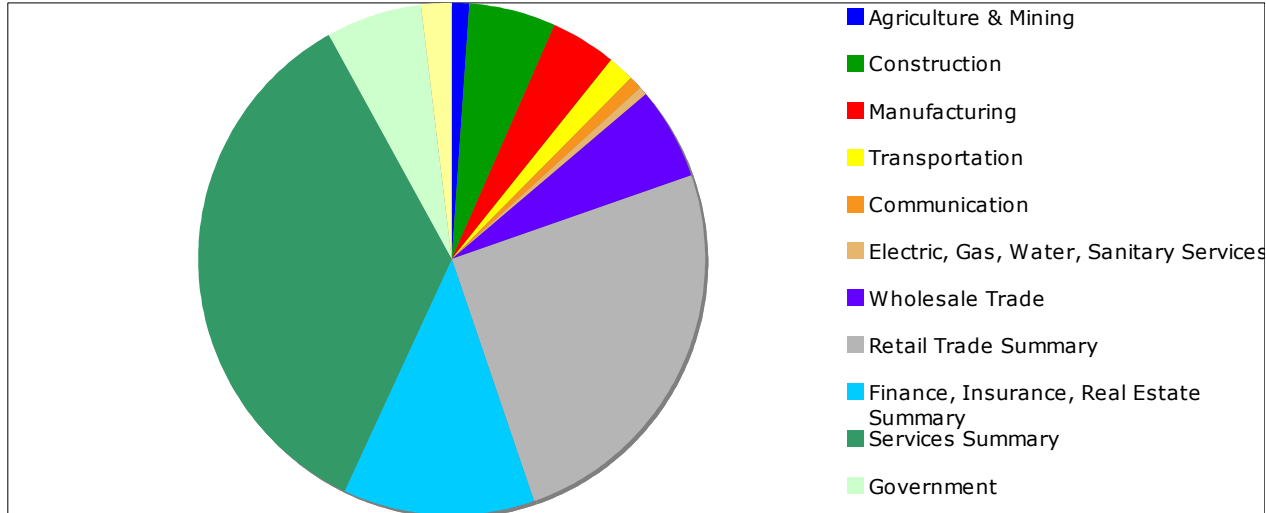


Adairsville Employees by Business - 2010

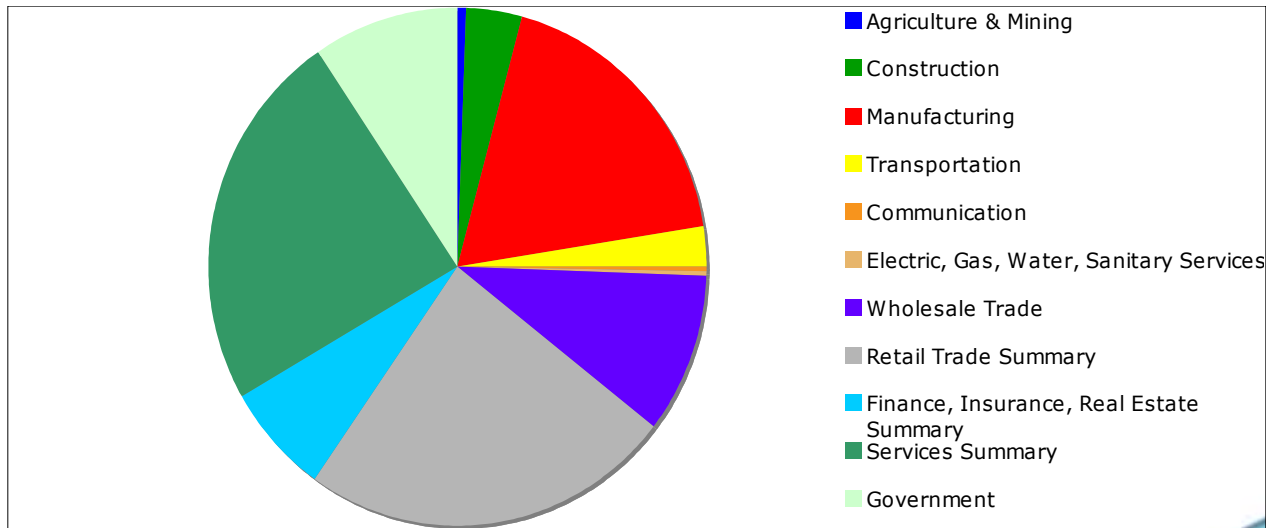


**All data acquired by the Cartersville/ Bartow County Department of Economic Development using ESRI Business Analyst Online

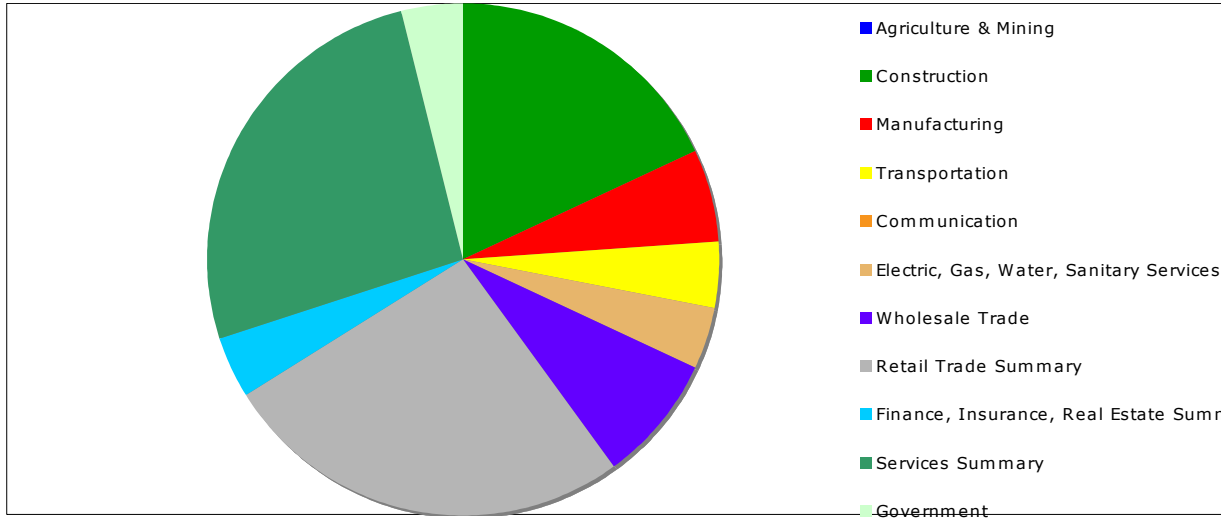
Cartersville No. of Business - 2010



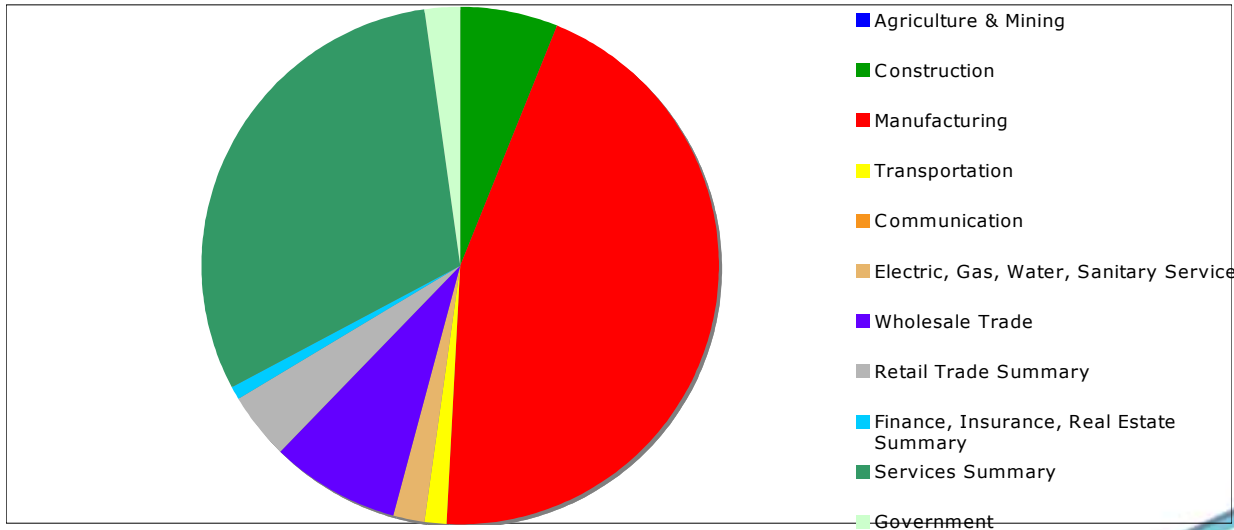
Cartersville Employees by Business - 2010



Emerson Total Business 2010



Emerson Total Employee by Business 2010



Concluding Thoughts

- Bartow County has not escaped the trends of the recession.
- We're not out of this mess yet...
- Bartow County is not alone!

